

Toad Edge™ 2.0 Preview

Release Notes

March 2018

These release notes provide information about the Toad Edge release.

- [About Toad Edge™ 2.0 Preview](#)
- [New features of Toad Edge](#)
- [Known issues](#)
- [System requirements](#)
- [Getting started with Toad Edge 2.0 Preview](#)
- [Globalization](#)

About Toad Edge™ 2.0 Preview

Toad Edge™ is a database management application that allows you to perform database administration tasks with ease.

Toad Edge™ allows you to:

- Connect to your databases, view, explore and edit database structure, database objects and properties
- Manage database objects, easily add, edit or drop objects in **Object Explorer**
- Manage data stored in your database, add, edit or remove records
- Write complex SQL code comfortably in **Worksheet**
- Compare and synchronize databases using powerful **Schema Compare**
- Obtain detailed information about your databases

Toad Edge 2.0 Preview is a preview release. See [Features](#) for more information.

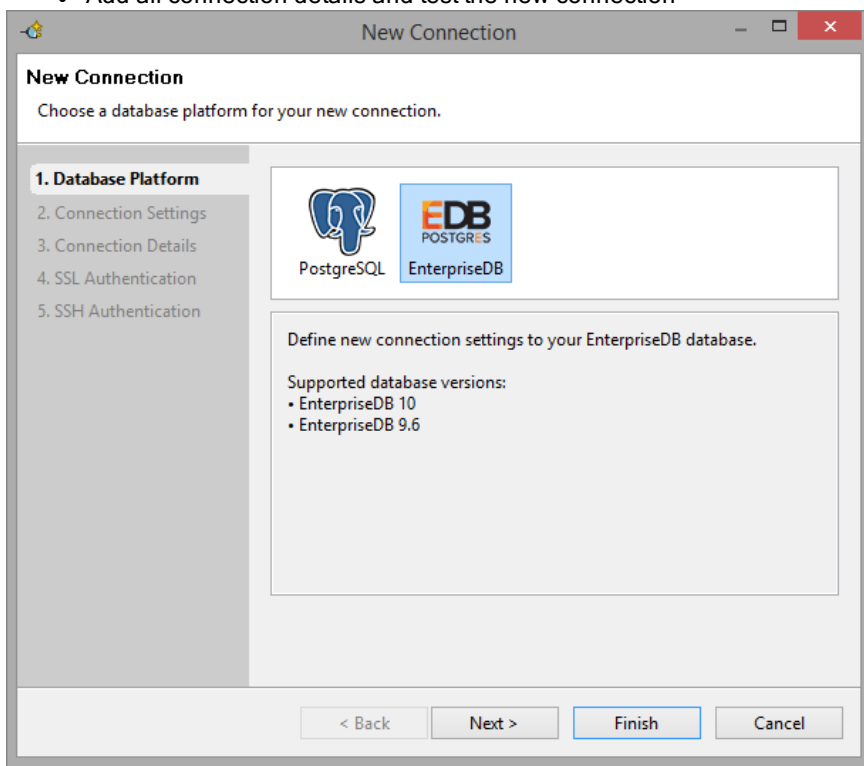
New features of Toad Edge

In Toad Edge™ 2.0 the following new features were implemented:

General features

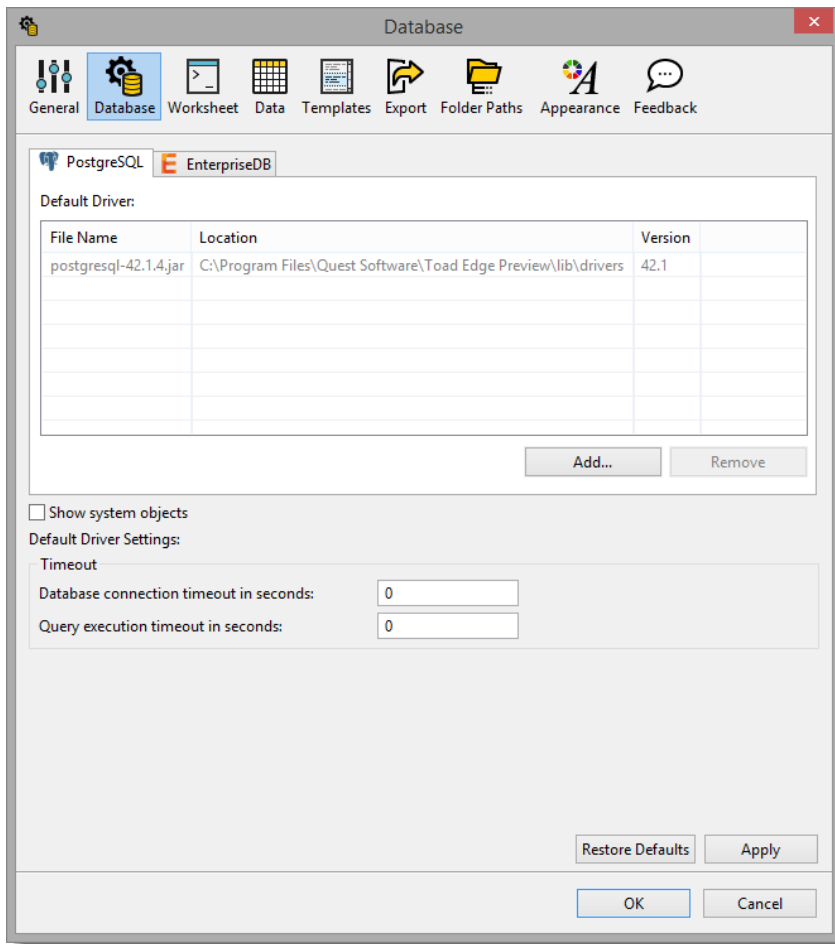
New connection wizard

- Our **New Connection** wizard will quickly guide you through the process of creating a new PostgreSQL and EDB connection
- Add all connection details and test the new connection



Platform-based preferences

- Add JDBC drivers for each database
- Edit connection details for every type of connection



Database features

Support for PostgreSQL and EnterpriseDB

- Toad Edge now supports connection to PostgreSQL and EDB™
- Toad Edge offers support for the following versions:

Supported database	Version
PostgreSQL	9.5, 9.6, 10
EnterpriseDB	9.6, 10

- Browse PG and EDB database objects in **Object Explorer** and edit them in **Object Details** editors
- Compare PG and EDB schemas and create reports
- Import and export data using **Object Explorer**

Known issues

The following is a list of issues, including those attributed to third-party products, known to exist at the time of release.

General known issues

Known Issue	Issue ID
Mouse cursor may become invisible in specific circumstances related to errors in Worksheet . Workaround: Switch into a different Toad Edge View and back.	5942
After upgrading from Toad Edge 1.0 , databases that were mapped (as part of Repository) will lose their mapping.	8223
When a database is synchronized with Repository, changes made to tables in the database that have been created using BLACKHOLE, CSV or FEDERATED engine are not detected in Object Explorer. Workaround: Display the comparison window (right-click the database Repository Synchronize). The changes will be detected and subsequently displayed in Object Explorer.	8332
Toad Edge will not override default settings of associated programs for opening JSON files on Windows.	9229

Third-party known issues

System requirements

Before installing Toad Edge 2.0 Preview, ensure that your system meets the following minimum hardware and software requirements.

Hardware requirements

Requirement	Details
Processor	Minimum dual core 64-bit processor
Memory	Minimum 4 GB RAM
Hard disk space	Minimum 500 MB + additional disk space for user data

Software requirements

Requirement	Details
Operating System	Windows 10 (64-bit) Windows 8.1 (64-bit) Windows 7 (64-bit) Windows Server 2012 R2 (64-bit) macOS 10.13 High Sierra (64-bit) macOS 10.12 Sierra (64-bit) OS X 10.11 El Capitan (64-bit)
Other requirements	.NET 4.0 is required to install the application on Windows 7

i | **NOTE:** Toad Edge may also run on virtual versions of the mentioned operating systems. Please note, however, that these configurations were not tested.

Database requirements

Supported database	Version
PostgreSQL	9.5, 9.6, 10
EnterpriseDB	9.6, 10

Other Requirements

Internet connection	In order to sign-in and validate your license internet connection is required to connect with our licensing servers.
Internet browser	In order to view documentation an internet browser is required. Internet Explorer 10 or later is recommended.

Getting started with Toad Edge 2.0 Preview

Contents of installation package

The Toad Edge release package contains the following:

- Installation file of Toad Edge 2.0 Preview (MSI or PKG)
- Product Documentation, including:
 - Release Notes
 - User Guide

Installation Instructions

- See [System requirements](#) before installation to avoid any possible issues during installation or later when using Toad Edge
- Launch Toad Edge installation file and follow the instructions in the installation wizard

How to Install Java Cryptography Extension

- Download the latest JCE files:
 - local_policy.jar
 - US_export_policy.jar
- and use them to replace the files in Toad Edge security folder
 - (...)\Quest Software\Toad Edge\bin\jre\lib\security\

Additional resources

Additional information is available from the following:

Globalization

This section contains information about installing and operating this product in non-English configurations, such as those needed by customers outside of North America. This section does not replace the materials about supported platforms and configurations found elsewhere in the product documentation.

This release is Unicode-enabled and supports any character set. In this release, all product components should be configured to use the same or compatible character encodings and should be installed to use the same locale and regional options. This release is targeted to support operations in the following regions: North America, Western Europe and Latin America, Central and Eastern Europe, Far-East Asia, Japan.

About Us

We are more than just a name

We are on a quest to make your information technology work harder for you. That is why we build community-driven software solutions that help you spend less time on IT administration and more time on business innovation. We help you modernize your data center, get you to the cloud quicker and provide the expertise, security and accessibility you need to grow your data-driven business. Combined with Quest's invitation to the global community to be a part of its innovation, and our firm commitment to ensuring customer satisfaction, we continue to deliver solutions that have a real impact on our customers today and leave a legacy we are proud of. We are challenging the status quo by transforming into a new software company. And as your partner, we work tirelessly to make sure your information technology is designed for you and by you. This is our mission, and we are in this together. Welcome to a new Quest. You are invited to Join the Innovation.

Our brand, our vision. Together.

Our logo reflects our story: innovation, community and support. An important part of this story begins with the letter Q. It is a perfect circle, representing our commitment to technological precision and strength. The space in the Q itself symbolizes our need to add the missing piece – you – to the community, to the new Quest.

Technical Support Resources

For sales or other inquiries, visit www.quest.com/contact.

Technical support is available to Quest customers with a valid maintenance contract and customers who have trial versions. You can access the Quest Support Portal at <https://support.quest.com>.

The Support Portal provides self-help tools you can use to solve problems quickly and independently, 24 hours a day, 365 days a year. The Support Portal enables you to:

- Submit and manage a Service Request
- View Knowledge Base articles
- Sign up for product notifications
- Download software and technical documentation
- View how-to-videos
- Engage in community discussions
- Chat with support engineers online
- View services to assist you with your product

Copyright

Copyright 2018 Quest Software Inc. ALL RIGHTS RESERVED.

This guide contains proprietary information protected by copyright. The software described in this guide is furnished under a software license or nondisclosure agreement. This software may be used or copied only in accordance with the terms of the applicable agreement. No part of this guide may be reproduced or transmitted in any form or by any means, electronic or mechanical, including photocopying and recording for any purpose other than the purchaser's personal use without the written permission of Quest Software Inc.

The information in this document is provided in connection with Quest Software products. No license, express or implied, by estoppel or otherwise, to any intellectual property right is granted by this document or in connection with the sale of Quest Software products. EXCEPT AS SET FORTH IN THE TERMS AND CONDITIONS AS SPECIFIED IN THE LICENSE AGREEMENT FOR THIS PRODUCT, QUEST SOFTWARE ASSUMES NO LIABILITY WHATSOEVER AND DISCLAIMS ANY EXPRESS, IMPLIED OR STATUTORY WARRANTY RELATING TO ITS PRODUCTS INCLUDING, BUT NOT LIMITED TO, THE IMPLIED WARRANTY OF MERCHANTABILITY, FITNESS FOR A PARTICULAR PURPOSE, OR NON-INFRINGEMENT. IN NO EVENT SHALL QUEST SOFTWARE BE LIABLE FOR ANY DIRECT, INDIRECT, CONSEQUENTIAL, PUNITIVE, SPECIAL OR INCIDENTAL DAMAGES (INCLUDING, WITHOUT LIMITATION, DAMAGES FOR LOSS OF PROFITS, BUSINESS INTERRUPTION OR LOSS OF INFORMATION) ARISING OUT OF THE USE OR INABILITY TO USE THIS DOCUMENT, EVEN IF QUEST SOFTWARE HAS BEEN ADVISED OF THE POSSIBILITY OF SUCH DAMAGES. Quest Software makes no representations or warranties with respect to the accuracy or completeness of the contents of this document and reserves the right to make changes to specifications and product descriptions at any time without notice. Quest Software does not make any commitment to update the information contained in this document.

If you have any questions regarding your potential use of this material, contact:

Quest Software Inc.
Attn: LEGAL Dept
4 Polaris Way
Aliso Viejo, CA 92656

Refer to our Web site (www.quest.com) for regional and international office information.

Patents

Quest Software is proud of our advanced technology. Patents and pending patents may apply to this product. For the most current information about applicable patents for this product, please visit our website at www.quest.com/legal.

Trademarks

Quest, and the Quest logo are trademarks and registered trademarks of Quest Software Inc. in the U.S.A. and other countries. For a complete list of Quest Software trademarks, please visit our website at www.quest.com/legal. Microsoft, Windows, Windows Server are either registered trademarks or trademarks of Microsoft Corporation in the United States and/or other countries. Oracle is a trademark or registered trademark of Oracle and/or its affiliates in the United States and other countries. MySQL is a registered trademark of MySQL AB in the United States, the European Union and other countries. macOS™ and OS X® are trademarks of Apple Inc., registered in the U.S. and other countries. All other trademarks, servicemarks, registered trademarks, and registered servicemarks are the property of their respective owners.